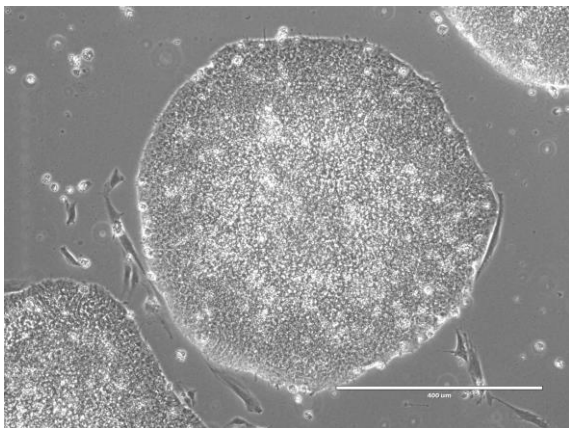
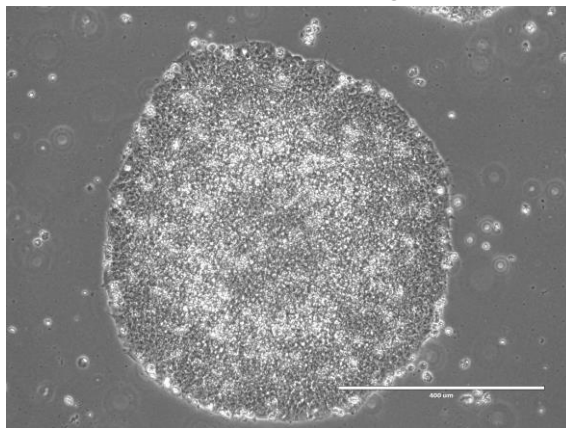


【 CiRA-j-1109 】 Morphology of iPSC colonies

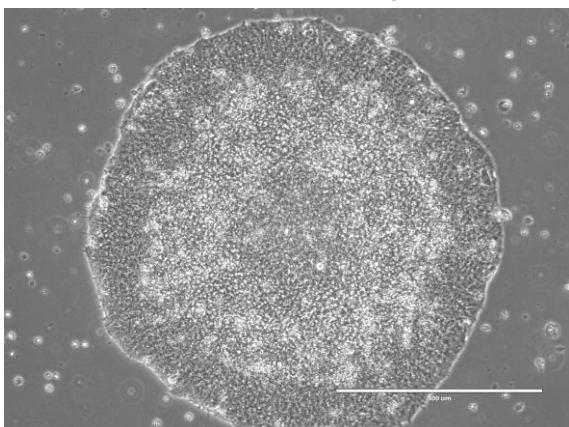
CiRA-j-1109-A: passage-3



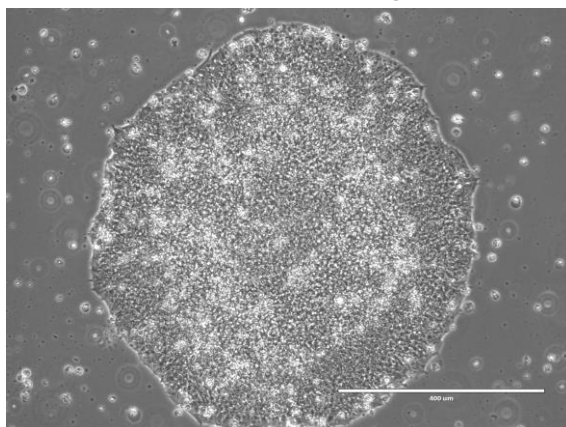
CiRA-j-1109-B: passage-3



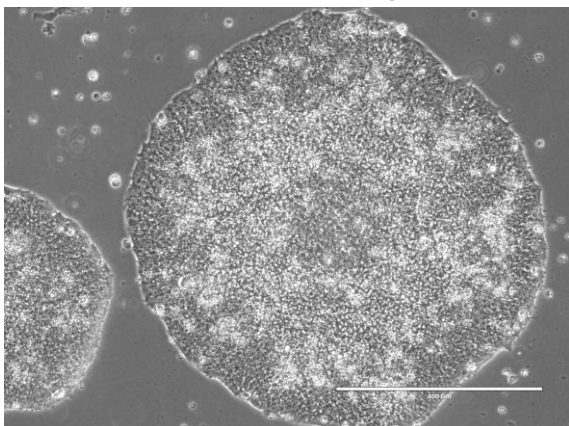
CiRA-j-1109-C: passage-3



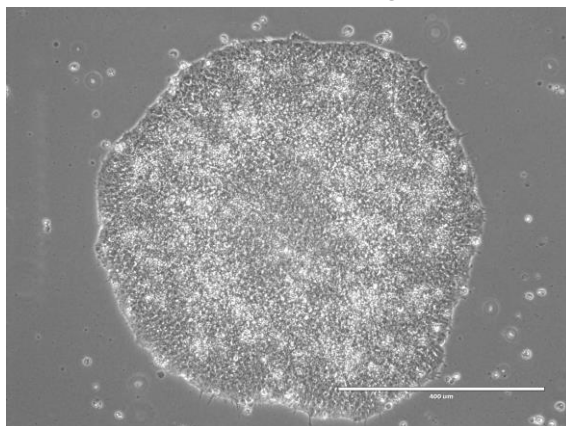
CiRA-j-1109-D: passage-3



CiRA-j-1109-E: passage-3



CiRA-j-1109-F: passage-3



(All images were captured at 4x magnification)